

MONTHLY BULLETIN

ON

PRICE TRENDS IN ANDHRA PRADESH

MARCH-2015

*DIRECTORATE OF ECONOMICS & STATISTICS
GOVERNMENT OF ANDHRA PRADESH
HYDERABAD*

PRICE STATISTICS – MONTHLY PRICE TRENDS

Price collection is one of the important tasks being attended by the Directorate of Economics & Statistics. The importance and usefulness of the information pertaining to the price movements has much significance in the context of controlling prices to avoid exploitation of adverse conditions.

The following prices are being collected by DE&S on daily/weekly/monthly/quarterly basis.

SI No	Subject	Periodicity
1	Daily Retail Prices of 6 essential commodities	Daily
2	Weekly Retail Prices of 25 essential commodities in 30 grades	Weekly
3	Consumer Price Index Numbers for Industrial Workers	Weekly and Monthly.
4	Wholesale Prices of 40 Agricultural commodities	Monthly
5	Farm Harvest Prices	Kharif and Rabi seasons
6	Daily Wages of Agriculture Labour & Non Agrl.labour	Monthly
7	Live –Stock , Live-Stock Products & Live - Stock feed prices	Monthly
8	Prices of Building Material & Wage Rates of Construction Labour	Quarterly

In the present bulletin, analysis of daily/weekly retail prices , CPI(IW) is being presented along with data on prices compiled at national level .

Sl.No.	Subject	Source
1	Wholesale Price Index	Economic Advisor, Industries, Ministry of Commerce and Industry,GOI.
2	Consumer Price Index for Agrl.Labourers/Rural Labourer	Labour Bureau
3	Consumer Price Index for Rural/Urban/Combined	Central Statistical Organisation

I. Retail Prices of Essential Commodities : The retail prices of 25 essential commodities are collected on weekly basis from all the 49 Revenue Divisional Head Quarters in the State and compiled weekly/monthly to monitor the price trends.

Statement Showing the State Average Retail Prices of Essential Commodities

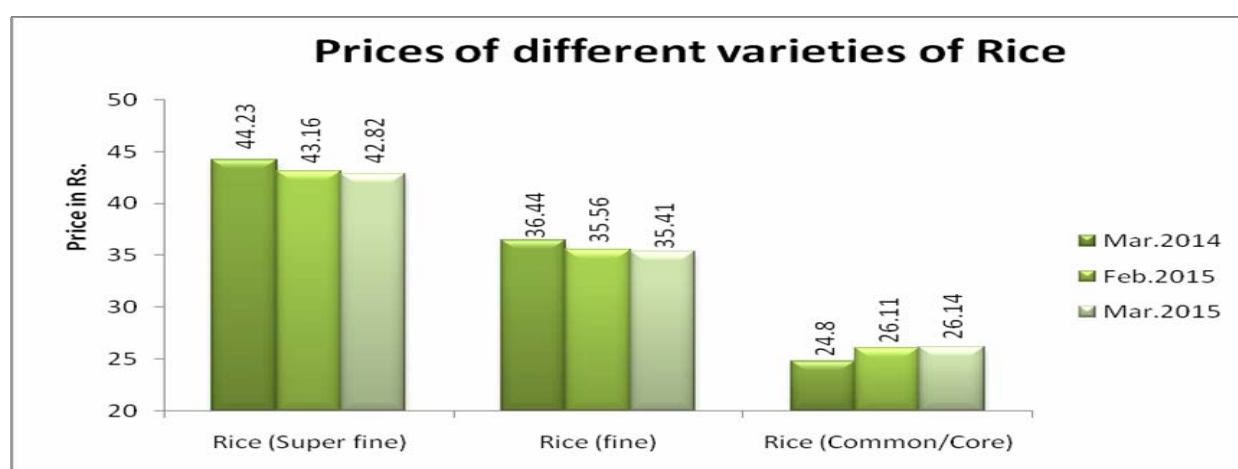
Sl. No	Commodity	Mar. 2014 (previous year)	Feb.2015 (previous month)	Mar. 2015	% of Variation over	
					Feb.2015 (previous month)	Mar . 2014 (previous year)
1	Rice Grade-I (super fine)	44.23	43.16	42.82	-0.79	-3.19
2	Rice Grade-I (Fine)	36.44	35.56	35.41	-0.42	-2.83
3	Rice Grade-II	24.80	26.11	26.14	0.11	5.40
4	Wheat	28.57	29.49	29.42	-0.24	2.98
5	Jowar	22.31	25.04	25.21	0.68	13.00
6	Ragulu	25.14	25.03	25.15	-0.48	0.04
7	Bajra	20.56	20.51	20.81	1.46	1.22
8	Arhar Dal	71.15	86.85	90.25	3.91	26.84
9	Gram Dal	46.76	51.39	52.33	1.83	11.91
10	Moong Dal	98.10	113.05	112.05	-0.88	14.22
11	Urd Dal	66.69	86.30	87.09	0.92	30.59
12	Groundnut Oil (Ltr.)	88.25	94.07	94.80	0.78	7.42
13	Palm Oil (Ltr.)	66.09	57.30	56.93	-0.65	-13.86
14	Sunflower Oil (Ltr.)	79.64	75.75	75.51	-0.32	-5.19
15	Vanaspathi(Ltr)	66.69	65.08	64.93	-0.23	-2.64
15	Salt (Crystal)	6.55	6.90	6.98	1.16	6.56
17	Salt (Iodised)	13.26	14.32	14.34	0.14	8.14
18	Turmeric Powder (100g)	15.04	16.03	16.08	0.31	6.91
19	Onions	13.39	24.03	24.07	0.17	79.76
20	Redchillies (Gr.I)	89.75	100.28	99.47	-0.81	10.83
21	Redchillies (Gr.II)	80.42	89.48	89.09	-0.42	10.78
22	Tamarind(wos)	79.14	90.41	90.11	-0.33	13.86
23	Tamarind (WS)	27.30	33.57	33.85	0.83	23.99
24	Potatoes	18.64	20.86	18.17	-12.90	-2.52
25	Brinjals	15.55	20.34	16.56	-18.58	6.50
26	Lady Finger	23.90	29.57	25.12	-15.05	5.10
27	Tomatoes	7.64	11.83	10.63	-10.14	39.14
28	Sugar	32.69	32.58	31.81	-2.36	-2.69
29	Gur (Gr.I)	39.02	40.38	39.80	-1.44	2.00
30	Gur (Gr.II)	34.39	36.48	35.54	-2.58	3.34

1.RICE (OPEN MARKET)

Comparison of State average retail prices of different varieties of Rice

During the month of Mar.2015 a marginal decrease (except Rice Common) was noticed in the State average retail prices of items in the group when compared with the prices of the previous month Feb.2015. The prices of Rice superfine and fine slightly decreased by 0.79 % and 0.42% when compared with the previous month Feb.2015. When compared with the corresponding month of the previous year, State average retail prices of Rice common variety has increased by 5.40% where as the price of Fine Variety and Super Fine variety marginally decreased by 3.19% and 2.83% . The prices and percentage variation over the previous month and year of Rice are presented in the following table and diagram.

SI No	Name of the Commodity	UNIT	Price (in Rs) in			Percentage variation	
			Mar.2014	Feb.2015	Mar.2015	Over month	Over year
1	Rice (Super fine)	Kg	44.23	43.16	42.82	-0.79	-3.19
2	Rice (fine)	Kg	36.44	35.56	35.41	-0.42	-2.83
3	Rice (Common/Core)	Kg	24.80	26.11	26.14	0.11	5.40



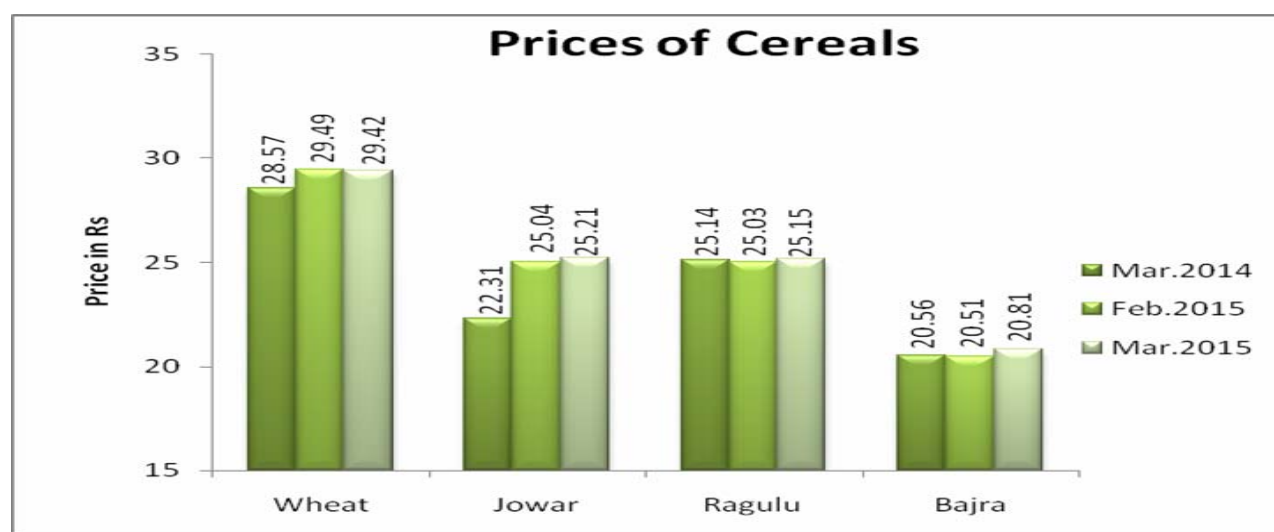
2.Cereals

Comparison of State average retail Prices of Cereals

During the month of Mar.2015, a slight decrease was noticed in the state average retail prices of Wheat (0.24%) and Ragulu(0. 48%) and a slight increase was noticed in the state average retail prices of Jowar (0.68) and Bajra (1.46%) when compared with the last month, Feb.2015.

When compared with the corresponding month of previous year (Mar. **2014**), the Stage Average Retail Prices of Wheat, Jowar, Ragulu and Bajra were increased by 298%,13.00%,0.04% and 1.22% respectively. The prices and percentage variation over the previous month and year of selected cereals are presented in the following table and diagram.

SI No	Name of the Commodity	UNIT	Price (in Rs) in			Percentage variation	
			Mar.2014	Feb.2015	Mar.2015	Over month	Over year
1	Wheat	Kg	28.57	29.49	29.42	-0.24	2.98
2	Jowar	Kg	22.31	25.04	25.21	0.68	13.00
3	Ragulu	Kg	25.14	25.03	25.15	-0.48	0.04
4	Bajra	Kg	20.56	20.51	20.81	1.46	1.22



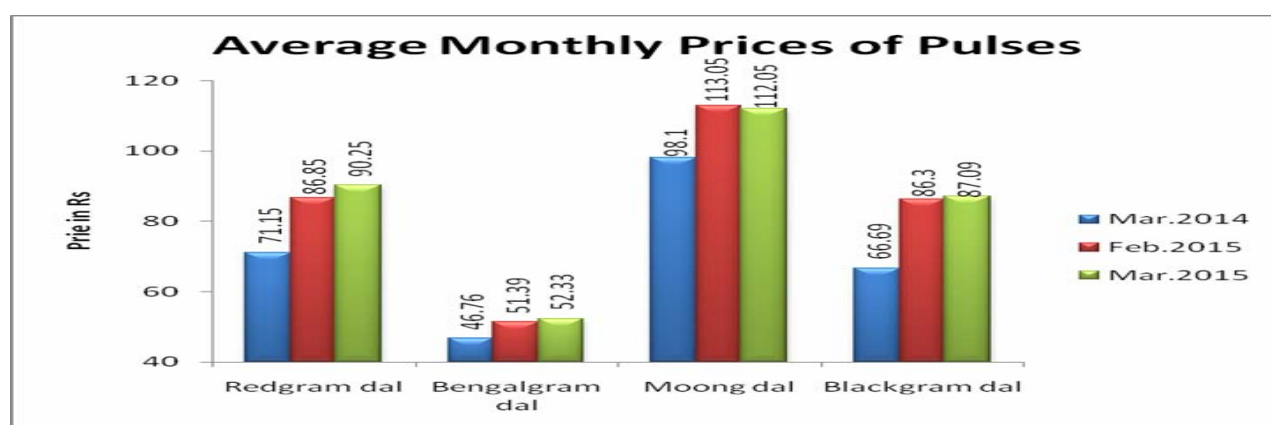
3.Pulses

Comparison of State average retail Prices of Pulses

During the month of Mar.2015, an upward trend is observed in the prices of Redgram dal (3.91%) Bengal gram dal (1.83%) and Blackgram dal (0.92%) and downward trend is observed in Moong dal (0.88%) when compared with the prices of previous month.

When compared with the corresponding month of the previous year state average retail prices of Red gram dal, Bengal gram dal, Moong dal and Black gram dal are shown an upward trend and increased by 26.84%,11.91%,14.22% and 30.59 % respectively. The prices and percentage of variation over the previous month and year of pulses are presented in the following table and diagram.

SI No	Name of the Commodity	UNIT	Price (in Rs) in			Percentage variation	
			Mar.2014	Feb.2015	Mar.2015	Over month	Over year
1	Redgram dal	Kg	71.15	86.85	90.25	3.91	26.84
2	Bengalgram dal	Kg	46.76	51.39	52.33	1.83	11.91
3	Moong dal	Kg	98.10	113.05	112.05	-0.88	14.22
4	Blackgram dal	Kg	66.69	86.30	87.09	0.92	30.59



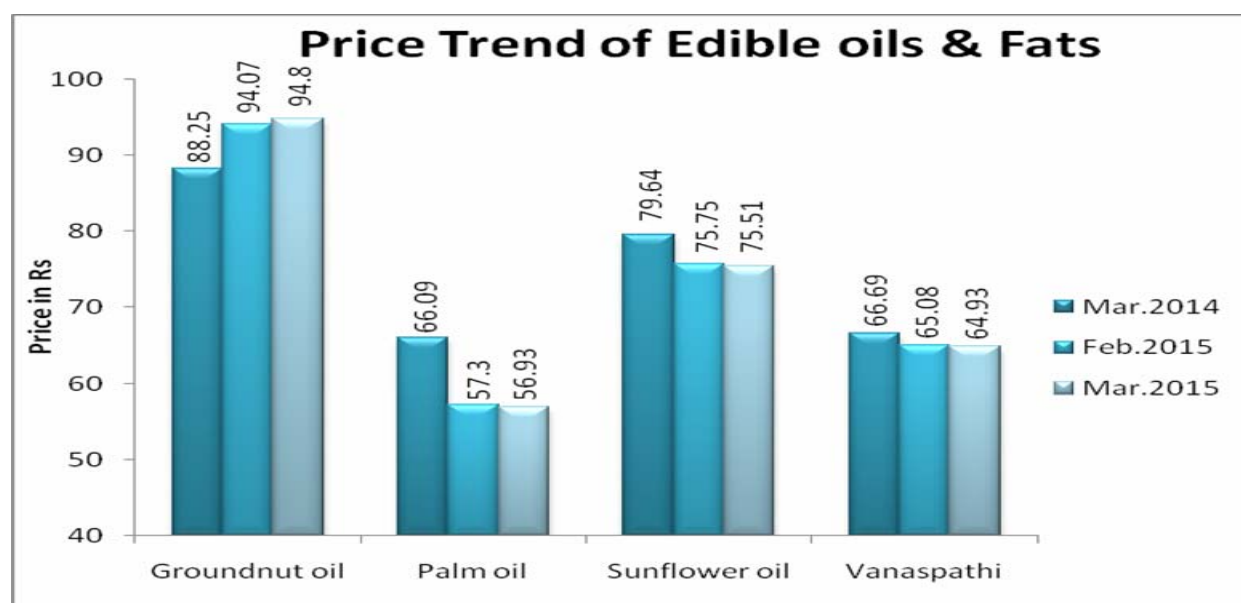
4.Edible Oils & Fats

Comparison of State average retail Prices of Edible Oils & Fats

During the month of Mar.2015, the prices of all varieties of Edible Oils is shown a slight decreasing trend except Groundnut oil when compared with the prices of previous month.

When compared with the corresponding month of previous year, the state average retail prices of Sunflower oil, Palm oil and Vanaspathi are shown downtrend and decreased by 5.19%, 13.86% and 2.64% respectively, whereas the Ground nut oil has increased by 7.42%.

SI No	Name of the Commodity	UNIT	Price (in Rs) in			Percentage variation	
			Mar.2014	Feb.2015	Mar.2015	Over month	Over year
1	Groundnut oil	Ltr	88.25	94.07	94.80	0.78	7.42
2	Palm oil	Ltr	66.09	57.30	56.93	-0.65	-13.86
3	Sunflower oil	Ltr	79.64	75.75	75.51	-0.32	-5.19
4	Vanaspathi	Ltr	66.69	65.08	64.93	-0.23	-2.64



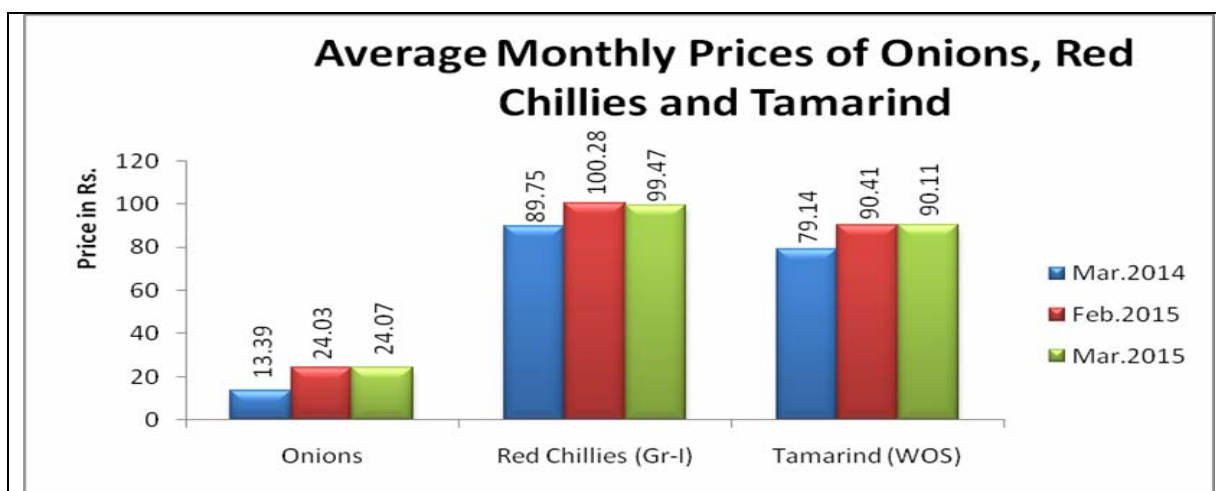
5. Condiments & Spices

Comparison of state average retail prices of selected Condiments and Spices

An upward trend is observed in the state average retail prices of selected condiments & spices. During the month of Mar.2015, slight increase is observed in the prices of Salt (Crystal & Iodised), Turmeric Powder and Onions by 1.16% ,0.14%, 0.31% and 0.17% respectively when compared with the prices of previous month.

The prices of all items are shown upward trend and increased from 6% to 80% when compared with the price of corresponding month of previous year. The prices and percentage of variation over the previous month and year of selected condiments & spices are shown in the following table and diagram.

SI No	Name of the Commodity	UNIT	Price (in Rs) in			Percentage variation	
			Mar.2014	Feb.2015	Mar.2015	Over month	Over year
1	Salt (Crystal)	Kg	6.55	6.90	6.98	1.16	6.56
2	Salt (Iodised)	Kg	13.26	14.32	14.34	0.14	8.14
3	Turmeric Powder	100gm	15.04	16.03	16.08	0.31	6.91
4	Onions	Kg	13.39	24.03	24.07	0.17	79.76
5	Red Chillies (Grade I)	Kg	89.75	100.28	99.47	-0.81	10.83
6	Red Chillies (Grade II)	Kg	80.42	89.48	89.09	-0.42	10.78
7	Tamarind (WOS)	Kg	79.14	90.41	90.11	-0.33	13.86



6.Vegetables

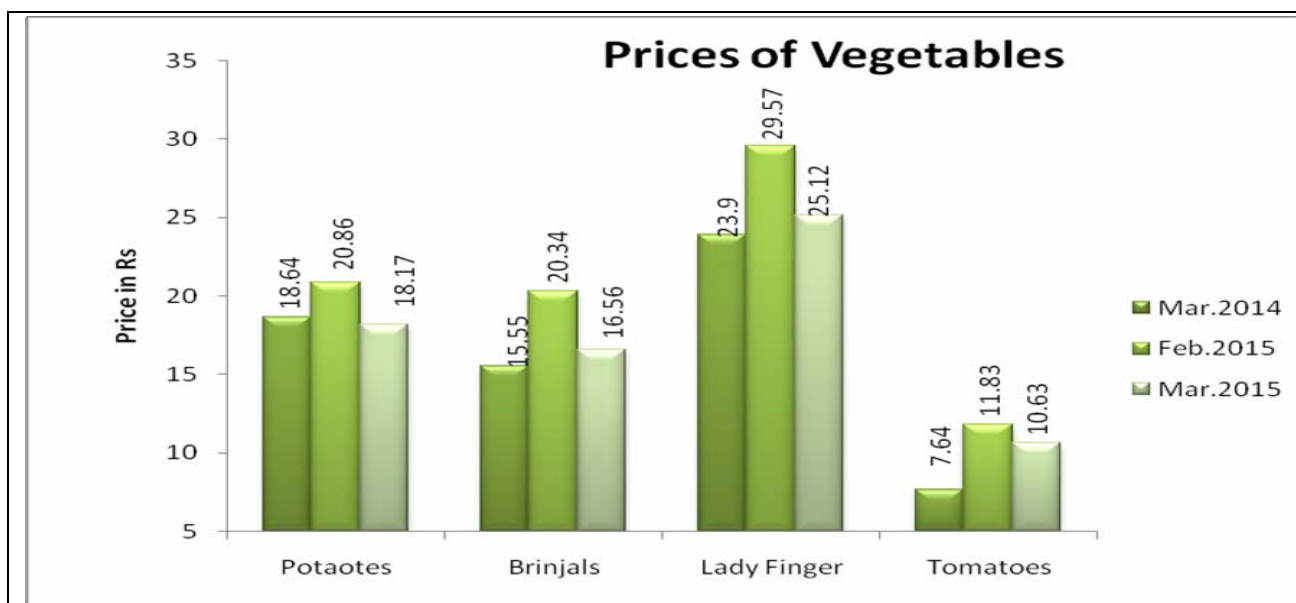
Comparison of state average retail prices of vegetables

During the month of Mar.2015, the prices of vegetables viz., Potatoes(12.90%) Brinjals (18.58%),Lady's Finger (15.05%) and Tomatoes (10.14%) respectively are shown decreasing trend when compared with the previous month.

The prices of Brinjals and Lady's Finger and Tomatoes are shown upward trend and increased by 6.50%, 5.10%,39.14% respectively and Potatoes are shown downward trend 2.52% when compared with the price of corresponding month of previous year.

The prices and percentage of variation over the previous month and year of vegetables are presented in the following table and diagram.

SI No	Name of the Commodity	UNIT	Price (in Rs) in			Percentage variation	
			Mar.2014	Feb.2015	Mar.2015	Over month	Over year
1	Potatoes	Kg	18.64	20.86	18.17	-12.90	-2.52
2	Brinjals	Kg	15.55	20.34	16.56	-18.58	6.50
3	Lady Finger	Kg	23.90	29.57	25.12	-15.05	5.10
4	Tomatoes	Kg	7.64	11.83	10.63	-10.14	39.14



7. Other food items (Sugar, Gur)

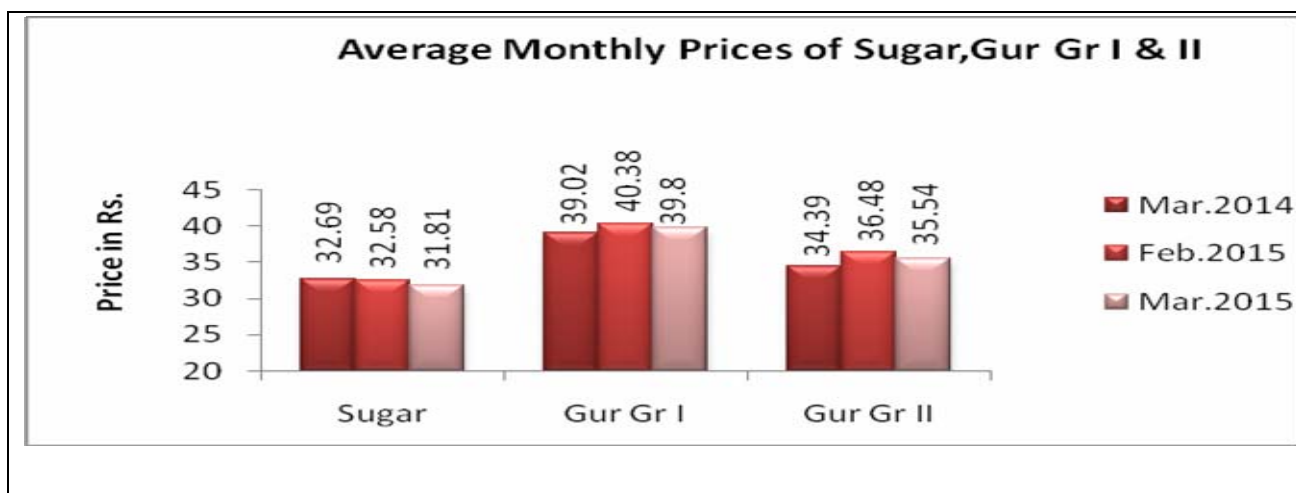
Comparison of State average retail prices of other food items

The state average retail prices of sugar, Gur(Gr-I) & (Gr-II) is decreased by 2.36%,1.44% and 2.58% respectively when compared with the prices of previous month, Feb.15.

The prices of Gur(Gr-I) & (Gr-II) is shown upward trend and increased by 2.00%, 3.34% respectively and Sugar is shown downward trend and decreased by 2.69% when compared with the prices of corresponding month of previous year.

The prices and percentage of variation over the previous month and year of other food items are presented in the following table and diagram.

SI No	Name of the Commodity	UNIT	Price (in Rs) in			Percentage variation	
			Mar.2014	Feb.2015	Mar.2015	Over month	Over year
1	Sugar	Kg	32.69	32.58	31.81	-2.36	-2.69
2	Gur (Gr-I)	Kg	39.02	40.38	39.80	-1.44	2.00
3	Gur (Gr-II)	Kg	34.39	36.48	35.54	-2.58	3.34



II. Consumer Price Index Numbers

The main objective of Consumer Price Index is to measure changes over a period of time in the level of retail prices of a fixed basket of goods and services consumed by a targeted group of people.

There are different consumer price indices compiled by different organizations for different segments of consumers namely, **Industrial workers (IW)**, **Agricultural Labourers (AL)** and **Rural Labourers (RL)**, **CPI for Rural Population, Urban Population and combined.**

1. Consumer Price Index Numbers for Industrial workers

Labour Bureau has been compiling and releasing CPI Numbers for Industrial Workers with base year 2001 on the last working day of the following month for each of the selected 78 centres at All India level. The following 3 centers are covered in Andhra Pradesh. **1. Guntur 2. Visakhapatnam 3. Vijayawada**

On par with Central series, the Directorate of Economics & Statistics, Govt. of A.P is also compiling the CPI (IW) with the same base year 2001 for the following Complex centres as State Series.

Month wise indices of State Series

Sl. No	Name of the Centre	Dec.2015	Jan.2015	No of Points
1	Vizianagaram & Chittivalasa	269	270	1
2.	Kakinada & Rajahmundry	271	271	0
3.	Jaggaiyah pet & Miryalaguda	272	274	2
4.	Tirupathi & Renigunta	252	253	1
	AP (Wtd) Index	259	260	1

All India consumer price index (Industrial Workers) for February.2015 decreased by 1 point and pegged at 253.

CPI-IW Of Andhra Pradesh and All India

Month	AP	ALL INDIA
Oct-14	259	253
Nov-14	259	253
Dec-14	259	253
Jan-15	260	254
Feb-15		253

The index is placed in DE&S Web-site (www.apdoes.org) for wider usage.

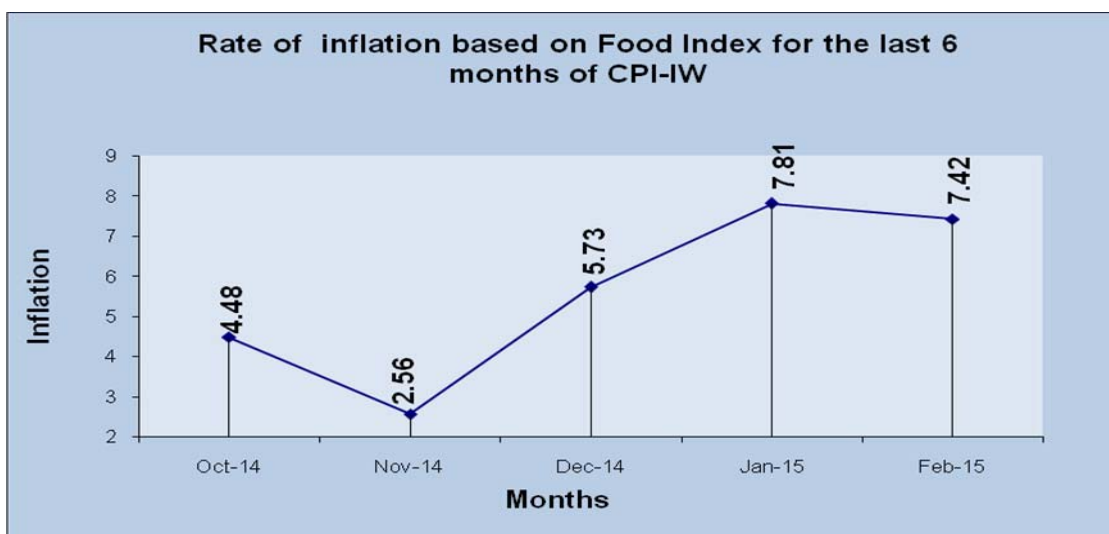
GENERAL INFLATION:-

The inflation based on CPI-IW (general) for the month of **Feb.2015** stood at **6.30%** as compared to **7.17%** for **Jan.2015** and **6.73%** during the corresponding month of the previous year.



FOOD INFLATION

➤ Inflation based on Food Index stood at **7.42%** in **Feb.2015** as against **7.81 %** in **Jan.2015** and **8.94 %** during the corresponding month of the previous year.



Consumer Price Index for Agricultural Labourers/Rural

Labourers:

Labour Bureau has been compiling CPI Numbers for Agricultural Labourers since September, 1964. The existing series of CPI Numbers for (i) Agricultural Labourers and (ii) Rural Labourers (base 1986-87=100) replaced the earlier series on base 1960-61=100 w.e.f. November, 1995. For compilation of these index numbers, the Field Operations Division (FOD) of the National Sample Survey Office (NSSO) collects prices data from 600 selected sample villages in 20 States. In Andhra Pradesh 54 Villages are covered.

The All-India Consumer price Index Numbers for Agricultural Labourers and Rural labourers for **February.2015** decreased by 1 and 2 points to stand at **803** points and **806** points respectively. (Base: 1986-87=100)

USAGE:-

The minimum basic rates of wages fixed are linked to the Consumer Price Index Numbers for the Agricultural workers. The Commissioner of Labour notified the Cost of Living Allowance for every six months on 1st April and 1st October of the calendar year.

For this purpose, the average rise in the State Agricultural workers Consumer Price Index numbers for the half year ending with December and June respectively shall be taken into account. `

GENERAL INFLATION : The point to point rate of inflation based on

- CPI-AL decreased from **6.21%** in Jan. 2014 to **6.08%** in Feb.2015
- CPI-RL decreased from **6.46 %** in Jan. 2014 to **6.19%** in Feb.2015.

FOOD INFLATION

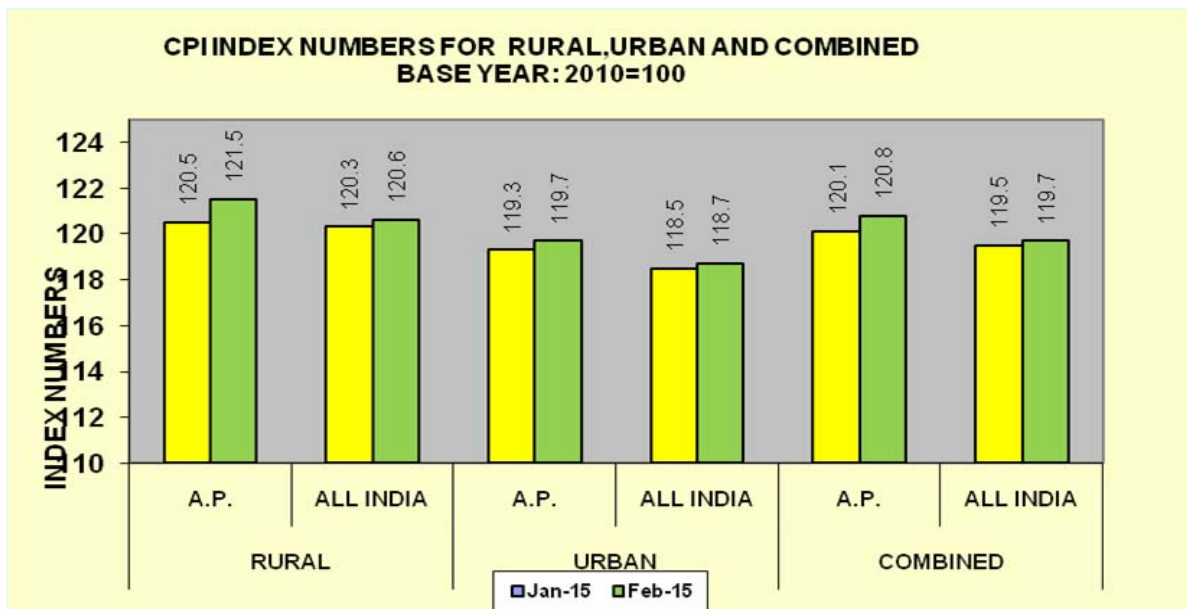
Inflation based on Food Index of CPI-AL and CPI-RL are **5.32%** and **5.58%** respectively during Feb.2015.

3. CONSUMER PRICE INDEX NUMBERS FOR RURAL, URBAN AND COMBINED

Consequently, The Central Statistics Office (CSO), Ministry of Statistics and Programme Implementation has revised the base year of the Consumer Price Index from 2010=100 to 2012=100 with effect from the release of indices for the month of January, 2015.

The CPI (rural, Urban, Combined) on Base 2012=100 is being released for the month of **February, 2015**. These new indices are compiled at State/UT and all-India levels.

Index Type	Andhra Pradesh (Combined)		All India	
	Jan.15 (Final)	Feb.15 (Prov.)	Jan.15 (Final)	Feb.15 (Prov.)
RURAL	120.5	121.5	120.3	120.6
URBAN	119.3	119.7	118.5	118.7
COMBINED	120.1	120.8	119.4	119.7



INFLATION: Provisional annual inflation rate based on all India general CPI (Combined, Rural, and Urban) for **February.2015** on point to point basis is as follows:

Type	Oct.14(F)	Nov.14(F)	Dec.14(F)	Jan.15(F)	Feb.15(P)
Combined	5.52	4.38	5.00	5.19	5.37
Rural	5.52	4.09	4.71	5.34	5.79
Urban	5.63	4.69	5.32	4.96	4.95

F: Final P: Provisional

Group wise indices of CPI (Rural, Urban, Combined)for the month of February.2015 Of Andhra Pradesh State(Combined)

Group	Rural	Urban	Combined
Food and Beverages	125.7	123.5	125.0
Pan, Tobacco and intoxicants	117.4	122.2	118.4
Fuel & Light	113.6	105.8	111.0
Clothing, Bedding & Footwear	125.5	119.1	123.4
Housing		121.4	
Miscellaneous	115.1	116.2	115.5
General Index	121.5	119.7	120.8

Source: CSO, MOSPI

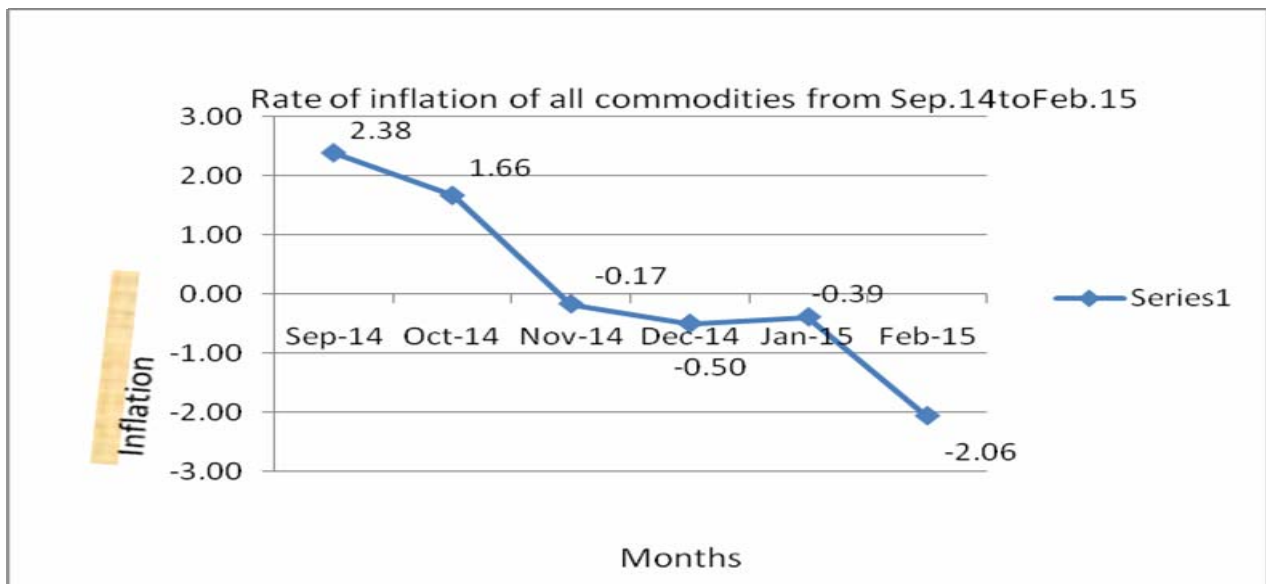
4. WHOLESALE PRICE INDEX (WPI)

Wholesale Price Index is compiled and released by the Office of the Economic Advisor, Ministry of Commerce and Industry on monthly basis. The WPI measures the average change over a period of time in the selling prices of producer's goods. The concept of wholesale price adopted in practice represent the quoted price of bulk transaction generally at primary stage, the price pertaining to bulk transaction of agricultural commodities(farm harvest prices/prices at the village mandi/Market)and ex-factory prices for others. The base year for WPI is 2004-05. A total of 676 items are included in the WPI covering 5482 quotations.

The Wholesale Price Index for 'All Commodities' (Base: 2004-05=100) for the month of Feb. 2015 declined by **1.4%** to **175.8** (Provisional) from **178.3** (Provisional) for the previous month.

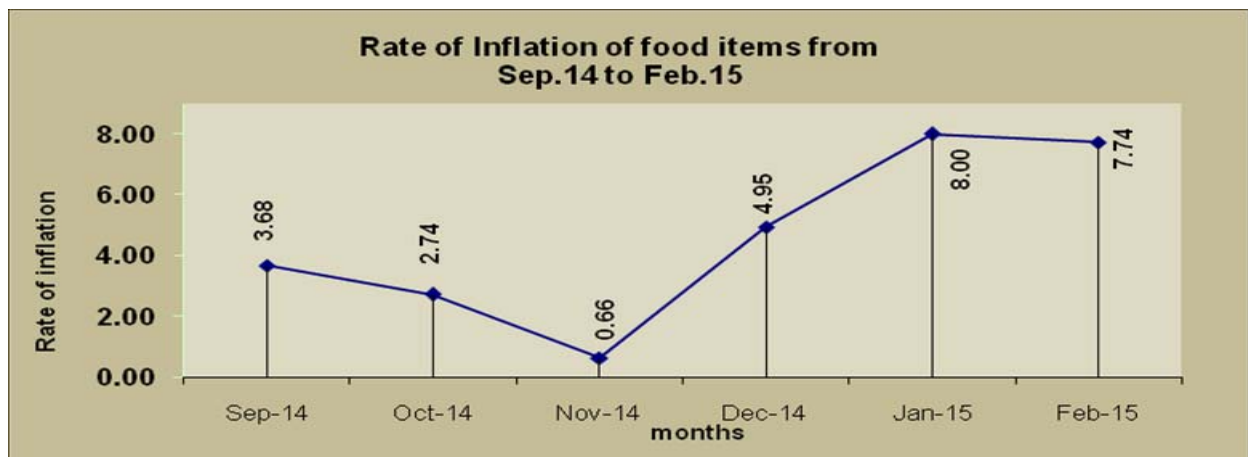
GENERAL INFLATION:

The annual rate of inflation, based on monthly WPI, stood at **-2.06%**(Provisional) for the month of **February-2015** (over **February -2014**) as compared to **-0.39%** (Provisional) for the previous month and **5.03%** during the corresponding month of previous year.



FOOD INFLATION:

Inflation based on Food index is increased to **7.74%** in **Feb.2015** from **8.00%** in Jan'14.



FINAL INDEX FOR THE MONTH OF November. 2014: (Base: 2004-05=100)

For the month of Nov.2014,the final Wholesale Price Index for "All
16

Commodities" (Base :2004-05=100) stood at 178.7 as compared to 179.8 (provisional)and annual rate of inflation based on final index stood at -0.50% as compared to 0.11% respectively as reported on 14.01.2015.

Source: *Office of Economic Adviser, Ministry of Commerce & Industry, New Delhi. Date of press release 16.02.2015*

III. Apart from the above ,the following prices are also compiled by DE&S: -

1.. BUILDING CONSTRUCTION COST INDEX:

The Prices of Building materials are being collected quarterly from the 13 District Head quarters for Urban and 13 selected Centres for Rural in Andhra Pradesh and the State averages and District Prices are being sent to the National Building Organisation, New Delhi along with the wages of the Construction Labour.

Sl.No	Item	Base Year Price (1988-89)	Price (June.2014)	Price (Sep.2014)	Price (Dec.2014)
1	Bricks	523	4312	4308	4331
2	Sand	62	1203	1618	1410
3	Stone ballast	161	1606	1488	1497
4	Cement	1325	6462	6237	6575
5	Timber	16068	87623	89767	89459
6	Steel	7235	49361	48878	47077
7	Tiles	1761	24123	24123	22790
8	Stone for slab & flooring	6536	28708	29734	28801
9	Paints	121	273	271	273
10	SW pipes	23	439	410	417
11	AC pipes	44	273	279	291
12	Skilled labour, Mason	40	417	431	433
13	Skilled Labour Carpenter	40	423	446	435
14	Unskilled labour	20	291	295	296
15	Unskilled labour	18	240	244	248

2.Livestock prices:

The livestock prices are collected from 53 centers covering all the Districts

STATE AVERAGE - WHOLESALE PRICES OF LIVESTOCK PRODUCTS FOR THE MONTH ENDING February - 2015								
DESCRIPTION			Units	Feb.2015	Jan.2015	Feb.2014	% of variation over	
							previous month	Feb. 2014
1.MEAT	i.Cattle		1 Kg.	163.50	160.00	152.73	2.19	7.05
	ii.Buffalo		1 Kg.	146.00	146.00	147.00	0.00	-0.68
	iii.Sheep		1 Kg.	442.50	442.31	415.77	0.04	6.43
	iv.Goat		1 Kg.	423.75	427.31	407.69	-0.83	3.94
	v.Pig		1 Kg.	153.18	152.08	139.58	0.72	9.74
2.MEAT BY PRODUCTS	2.1 HEAD	1.Sheep	Each	257.50	263.85	262.31	-2.41	-1.83
		2.Goat	Each	240.83	247.69	250.38	-2.77	-3.81
	2.2 LEGS	1.Sheep	4 Nos.	137.25	132.08	124.38	3.91	10.35
		2.Goat	4 Nos.	128.33	123.85	117.31	3.62	9.39
3.HIDES AND SKIN	i.Cattle		Each	438.00	456.82	386.82	-4.12	13.23
	ii.Buffalo		Each	357.00	365.50	316.36	-2.33	12.85
	iii.Sheep		Each	199.17	205.00	212.69	-2.84	-6.36
	iv.Goat		Each	152.50	160.00	171.54	-4.69	-11.10

7. WHOLESALE PRICES OF 40 AGRICULTURAL COMMODITIES:

The wholesale prices of 40 agricultural commodities are collected and compiled on monthly basis (last Friday of the month) with District as a unit and State average wholesale Price report is prepared . These prices are used to assess the price trends at wholesale centers. In addition to utilizing the same prices for verification of the market trend, they are also used for comparison with farm harvest prices and retail prices.

STATE AVERAGE WHOLESALE PRICES OF 40 AGRICULTURAL COMMODITIES IN A.P FOR THE MONTH OF Feb.2015

(Prices in Rs.)

Sl. No.	Item Name	Unit	Feb.2015	Jan.2015	% Var
1	Paddy I Sort	Quintal	1773.27	1685.18	5.23
2	Paddy II Sort	Quintal	1439.50	1408.30	2.22
3	Rice I Sort	Quintal	3638.46	3592.31	1.28
4	Rice II Sort	Quintal	2696.15	2646.15	1.89
5	Wheat	Quintal	2499.23	2518.46	-0.76
6	Jowar - White	Quintal	1779.17	1808.33	-1.61
7	Jowar - Yellow	Quintal	2533.33	2321.43	9.13
8	Bajra	Quintal	1550.00	1504.17	3.05
9	Ragi	Quintal	1953.85	1976.92	-1.17
10	Maize	Quintal	1283.33	1292.22	-0.69
11	Bengalgram (Whole)	Quintal	3843.85	3638.46	5.64
12	Redgram (Whole)	Quintal	5766.67	5166.67	11.61
13	Greengram (Whole)	Quintal	7223.08	7603.85	-5.01
14	Blackgram (Whole)	Quintal	5925.00	6066.67	-2.34
15	Horsegram (Whole)	Quintal	2708.33	2812.50	-3.70
16	Chillies Dry I Sort	Quintal	8876.92	9007.69	-1.45
17	Chillies Dry II Sort	Quintal	7915.38	8023.08	-1.34
18	Turmeric	Quintal	7712.92	7645.83	0.88
19	Coriander	Quintal	10301.92	11117.31	-7.33
20	Tamarind (WOS)	Quintal	7092.31	7384.62	-3.96

Sl. No.	Item Name	Unit	Feb.2015	Jan.2015	% Variation
21	Garlic	Quintal	5969.23	7169.23	-16.74
22	Bananas	100 Nos	281.67	274.55	2.59
23	Limes	100 Nos	147.92	128.75	14.89
24	Batavia (Mosambi)	100 Nos	475.00	451.43	5.22
25	Potatoes	Quintal	1406.92	1719.23	-18.17
26	Brinjal	Quintal	1086.31	1542.31	-29.57
27	Tomato	Quintal	657.69	867.31	-24.17
28	Onions	Quintal	1957.69	2023.46	-3.25
29	Sugar (OMP)	Quintal	2954.62	3007.31	-1.75
30	CaneJaggery - Gur	Quintal	3384.62	3434.62	-1.46
31	Groundnut Pods	Quintal	4191.67	4107.67	2.04
32	Groundnut Seeds	Quintal	7691.67	7725.00	-0.43
33	Gingelly Seeds	Quintal	8780.00	8880.00	-1.13
34	Caster Seeds	Quintal	3522.25	3435.50	2.53
35	Copra	Quintal	10622.22	10987.50	-3.32
36	Coconut	1000 Nos	11458.33	11363.64	0.83
37	Cotton Kapas	Quintal	3965.00	3400.00	16.62
38	Tobacco (Verginia)	Quintal	NA	NA	-
39	Tobacco (Country)	Quintal	8850.00	8700.00	1.72
40	Betel Leaves	1000 Nos	271.67	260.00	4.49